



TIKKURILA

# Kids' room

PAINT YOUR WORLD

24 COLORS  
PICKED BY  
CHILDREN

8 AMAZING  
KIDS' ROOMS

NEVERMOON







TIKKURILA

# LIFE IS A COLORFUL GAME!

When your children reach a certain age, it's time to redecorate the kids' room. First graders may feel this is the right time to cover childish patterns on the walls. Pre-teens can have even stronger visions of what their room should look – and feel – like.

Whatever the child's age, having a room that feels like your own is important to everyone. Plan the room's decor together, using this brochure and the colors picked by children. You can redo the whole room from floor to ceiling, or you can paint just one wall using your child's favorite color and give a new, more playful look to a piece of furniture. It's easy and fun!

Life is a colorful game – let's enjoy all of its shades. Children like even small changes and transforming their room into their own kingdom. A room in which every day is a great adventure and anything is possible. A journey to Nevermoon and back, if this is the right day to do it.

P.S. Remember that water-based paints are odor-free and safe to use. Any splashes are easy to wipe off with water.

Have fun creating colorful decors,

**Marika Raike**

Design Manager

Tikkurila Oyj





## WHAT KIND OF PAINT FOR A KIDS' ROOM?

When you are painting a kids' room, choose a paint that does not release harmful compounds even when used for an extended period. Tikkurila's wide range of products includes both paints and lacquers that meet these requirements, and they are suitable for painting everything in the kids' room, including the walls, furniture, and toys.

All of the Tikkurila paints suitable for kids' rooms – such as **Joker**, **Helmi**, **Taika**, and **Liitu** – are in the highest **M1** category of surface materials. The M1 Label shows that the

products have been tested by an independent laboratory. Joker also bears the Allergy Label, awarded by the **Allergy and Asthma Federation of Finland**.

Additionally, Helmi Furniture Paints meet the requirements for the surface finishes of toys, meaning you can safely use them to paint children's furniture and toys.



### Joker

Joker is a perfect paint for the kids' room. It is odor-free and bears the Nordic and EU Ecolabels, the M1 Label (low emissions), and the Allergy Label.



### Helmi

Helmi is a versatile furniture paint with a proven safety record. The M1 Label and Nordic Ecolabel guarantee that Helmi is a high-quality and eco-friendly choice.



### Taika Glow

Make surfaces glow in the dark with Taika Glow effect lacquer. A fun way to bring the kids' room to life after turning off the lights. M1.



### Magnetic

Apply Magnetic special paint to create fun magnetic surfaces in the kids' room.



### Liitu

With Liitu paint, you can easily create an individual chalkboard. Liitu can be tinted to the many hundreds of Tikkurila shades. M1.



### Taika

Use Taika Paint to paint silvery or golden surfaces on the walls, furniture, and decorative items in the kids' room. M1.

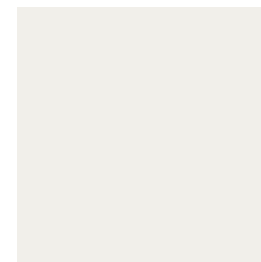


### Taika Stardust

Taika Stardust effect glaze is like a sprinkling of magic dust. It adds a golden or silvery sparkle to an ordinary painted surface. M1.

Tikkurila provides durable, high-quality interior paints that are safe to use in the kids' room.

## 24 COLORS PICKED BY CHILDREN



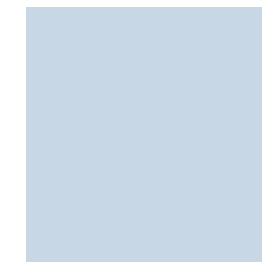
F497 Paper



M326 Marmalade



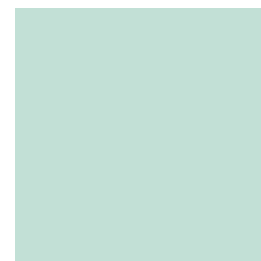
N429 Denim



Y354 Cumulus



J354 Daydream



Y370 Capri



V389 Yellow Transparent



J383 Tinkerbell



M350 Ink



M316 Tomato



J442 Menthol



K385 Meadow



L385 Lime



M384 Basilica



X342 Hyacinth



X370 Tiffany



K498 Haven



N500 Agate



Y498 Indian Ink



H336 Candyfloss



F306 Sorbet



G401 Persimmon



F336 Marshmallow



Y441 Aquarelle

# 8 Worlds planned by kids.



## Join the circus!

Ringmasters know that painting is a piece of cake! [Page 8](#)

## Magic princess castle

Paint it right to get half a kingdom and more! [Page 12](#)

## Happy farm

A cheerful animal farm for the little ones. [Page 16](#)

## Nevermoon

Imagine yourself to the moon and back. [Page 20](#)

## Jungle adventure

Tame wild kids with a lush jungle adventure. [Page 24](#)

## Stars and more stars

A style star's pastel heaven. [Page 28](#)

## Mystic metropolis

The glow of the big city enchants around the clock. [Page 32](#)

## Rainbow of dreams

A skyline painter's hazy world of its own. [Page 36](#)





**Wall:** Joker, F497 Paper and M326 Marmalade.

**Table:** Helmi Furniture Paint, N429 Denim, and .

**Stool:** Taika Gold Paint.

# COME SOAR THROUGH THE AIR!

Dear brothers, sisters, neighbors' kids, and their friends, welcome to a circus!  
Step into a room full of joy and forget all serious stuff. Let your imagination fly,  
play and soar.



## Message board:

Magnetic paint,  
Joker, N429 Denim,  
Taika Gold Paint.

▲ Paint a magnetic board with scalloped edges for drawing and displaying pictures. For easy-to-follow instructions on how to do it, visit [www.tikkurila.fi/lastenhuone](http://www.tikkurila.fi/lastenhuone).





## HOW TO CREATE A CIRCUS:

- 1** Mark the center of the circus tent at the bottom of the wall.
- 2** Draw a straight vertical line from the mark to a height of 2 m. Mark the spot with a pencil and hammer a small nail into the wall. This is the highest point of the tent.
- 3** Measure 135 cm in both directions from the center at the bottom and mark the points. These indicate the outer edges, or the width, of the tent (270 cm\*).
- 4** Draw straight vertical lines from the outermost points at the bottom to a height of 145 cm, using a spirit level. Mark both points and hammer small nails into the wall.
- 5** Draw the curved roof of the tent using string. Tie a knot at one end of the string and attach it to the center of the roof. Attach the other end to one edge of the roof.
- 6** Repeat the above steps on the other side. Make sure that the string is the same length on both sides.
- 7** Apply masking tape to the outer edges of the roof and walls of the tent.
- 8** At the bottom of the tent, mark points at distances of 30 cm. You can use a 30 cm ruler to make measuring easier.
- 9** Draw straight lines from the points at the bottom to the roof edge.
- 10** Apply wide masking tape to the outer edges of the stripes that are to be painted red.
- 11** Paint the upper edges of the red stripes with a brush, then continue painting with a small roller. Allow to dry.
- 12** Remove the tape as soon as you have finished painting.

### WHAT YOU NEED



2,7l Joker M326



3h



\* You can make the tent wider, but remember that the width of the tent should be divisible by the width of the stripes (30 cm) and that the outermost stripes should be red.

In association with: Granit, Noa Noa, Ombrellino, Tikau, Vepsäläinen.



### THE RINGMASTER'S PAINTING TIPS:

For easy-to-follow painting instructions, watch a video at [www.tikkurila.fi/lastenhuone](http://www.tikkurila.fi/lastenhuone).





The kingdom is crowned by glittering headboards.



**Wall:** Joker, Y354 Cumulus.

**Crowns:** Taika Gold Paint.

**Crown jewels:** Joker, G342 Marilyn and X445 Lido.



## PRINCESS REBEL AND ~~HALF~~ THE KINGDOM!

Knights and princesses can play to their heart's content in the shade of this castle wall. Decorate it with flowers, and put the knight's impressive shields on display. A wall created with Liitu Blackboard Paint gives wings to the imagination.



**Wall** Joker, Y354 Cumulus.

**Castle wall:** Liitu, J354 Daydream.

PLEASE **DO** DRAW ON THIS WALL!  
Liitu Blackboard Paint can be tinted to hundreds of shades and is easy to apply.







# PAINTING INSTRUCTIONS FOR PRINCESS REBEL:

## HOW TO PAINT A CASTLE WALL:

- 1 Draw a horizontal line at a height of 130 cm. This is the upper edge of the castle wall.
- 2 Fold an A4-size paper in half and use it for drawing the squares. Place the paper on the wall above the horizontal line and trace the outlines with a pencil.
- 3 Move the paper and mark the starting point of the next square. Continue until you have marked the outlines of all the squares.
- 4 Apply wide masking tape to the upper edge of the wall, following the lines.
- 5 Trim the taped corners with a wallpaper trimming knife.
- 6 Stir the paint well.
- 7 Paint the edges of the wall with a small roller.
- 8 Paint the rest of the wall twice with a larger roller, letting the paint dry in between the layers. Remove the tape as soon as you have finished painting.

WHAT YOU NEED  2,7l Joker Y354, 2 x 0,9l Liitu J354  3h

In association with: Granit, Noa Noa, Ombrellino, Tikau, Tingeling, Stockmann, Vepsäläinen.

PS. You can use the chalkboard one week after painting.



## THE CROWN CROWNS IT ALL!

For instructions on how to paint the headboards, visit [www.tikkurila.fi/lastenhuone](http://www.tikkurila.fi/lastenhuone).





When the color scheme is subdued and the contrasts are moderate, the impression is not restless even if the rest of the decor is colorful.

**Upper part of the wall:** Joker, Y370 Capri.  
**Lower part of the wall:** Joker, V389 Yellow Transparent.  
**Patterns:** Liitu, J383 Tinkerbell.  
**Stool legs:** Helmi Furniture Paint, M384 Basilica.

**Stool legs:** Helmi Furniture Paint, M384 Basilica.



Joker is a safe, odor-free interior paint ideal for painting kids' rooms.

Helmi Furniture Paints are classified in the highest M1 category of surface materials. They meet the requirements for the surface finishes of toys, meaning you can safely use them to paint children's furniture.

A stylized illustration of a green barn with a white door featuring a black 'X' pattern. A small square window is visible in the upper part of the barn's front facade. To the right of the barn stands a black pitchfork. The entire scene is set against a light blue background with a subtle white grid pattern.



# I WANNA DO IT!

Give the smallest family members their own brushes and let everyone paint these cute ladybugs!



## HOW TO PAINT A BARN:

- 1 Paint the wall using shade Y370 Capri. Allow to dry.
- 2 Draw a horizontal line at a height of 120 cm. Use a spirit level to achieve a straight line.
- 3 Apply wide masking tape above the horizontal line.
- 4 Paint the lower part of the wall using shade V389 Yellow Transparent.
- 5 Mark the center of the barn's base on the wall. Measure 180 cm vertically from the center and mark the point with a pencil.
- 6 Measure 1 m in both directions from the center at the bottom and mark the points. Draw straight vertical lines from the points to a height of 140 cm, using a spirit level. This is the height of the side walls.
- 7 Draw the edge of the roof using string and masking tape.
- 8 Apply wide masking tape to the outer edges of the barn.
- 9 Paint the barn using shade J383 Tinkerbell. Stir the paint well and paint the edges with a small roller.
- 10 Paint the rest of the barn twice with a larger roller, letting the paint dry in between the layers.

### WHAT YOU NEED



2,7l Y370 Joker, 2,7l V389 Joker, 2 x 0,9l J383 Liitu



3h

In association with: Lumo Kids, Tingeling, Vepsäläinen.



### MORE PAINTING INSTRUCTIONS:

For easy-to-follow painting instructions, watch a video at [www.tikkurila.fi/lastenhuone](http://www.tikkurila.fi/lastenhuone).

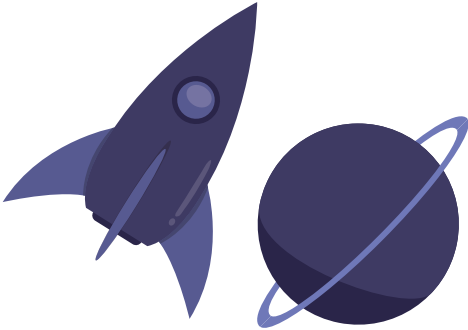






# NEVERMOON!

This room belongs to the Moonman, who travels to Nevermoon and back every day – without stepping out of the door. You can only get to Nevermoon by flying. The address: second star on the left, straight to the morning.







# HOW TO PAINT NEVERMOON:

## HOW TO DRAW A MOON ON THE WALL:

- 1 Draw a circle on the wall using a small nail, string, and white chalk or a colored pencil. Hammer a small nail into the center of the moon. Attach a piece of string to the nail and chalk.
- 2 Pull the string tight and draw a circle with a diameter of around 1 meter. Once the circle is finished, remove the nail.

## HOW TO DRAW A GLOW-IN-THE-DARK CRESCENT ON THE WALL:

- 5 Draw an arch near the outer edge of the moon using a small nail, string, and chalk.
- 6 Paint the edges of the crescent with a small brush using Taika Glow effect lacquer.
- 7 Paint the center of the crescent using Taika Glow. Allow to dry and apply a second layer of paint.

### WHAT YOU NEED



7,2l M350 Joker, 0,9l Taika Silver Paint, 0,225l Taika Glow



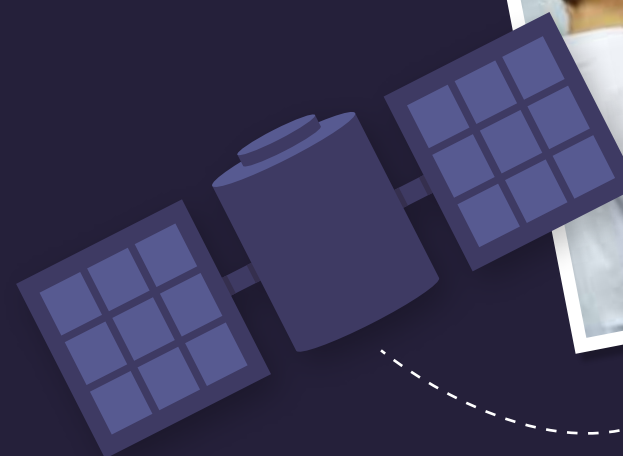
3h

In association with: Catalina, Ombrellino, Tingeling, Vepsäläinen.

Did you know that Taika Glow, which is charged by light, can glow for up to six hours after turning off the lights? Taika Glow is water-based and safe, which makes it ideal for the kids' room.

## OTHER PAINTING INSTRUCTIONS FOR THE MOONMAN:

For easy-to-follow painting instructions, watch a video at [www.tikkurila.fi/lastenhuone](http://www.tikkurila.fi/lastenhuone).





**Wall:** Joker, J442 Menthol.

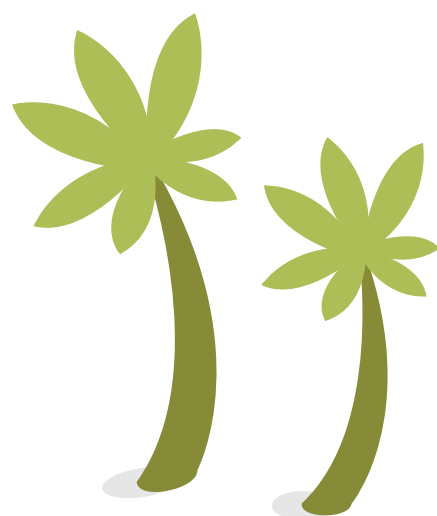
**Patterns:** K385 Meadow, L385 Lime, M384 Basilica.



CAN'T GO OVER IT  
CAN'T GO UNDER IT  
CAN'T GO AROUND IT  
GOTTA GO THROUGH IT!

## WHAT'S UP AHEAD? A JUNGLE!

This wild green jungle is made for great adventures.  
You can hear parrots singing and lions roaring – just look at all  
those gleaming eyes.



**Wall:** Joker, K385 Meadow.

**Hut:** Helmi Furniture Paint, M384 Basilica.



ANNA, COME  
TO THE WINDOW!  
IT'S ME, ORC!







# HOW TO CREATE A WILD JUNGLE:

## HOW TO PAINT A JUNGLE:

- 1 First paint the wall using shade J442 Menthol.
- 2 Use narrow masking tape to mark out areas of different sizes and shapes on the wall.
- 3 Paint the marked areas twice using different shades of green, letting the paint dry in between the layers. Remove the tape as soon as you have finished painting.


## HOW TO PAINT THE EYES:

- 4 Draw eyes on clear plastic (e.g., a plastic folder) and cut them out.
- 5 Use masking tape to attach the eyes where you want to paint them. Paint pairs of eyes in several places using gold Taika Paint. Allow to dry. Do not use too much paint in order to prevent it from dribbling onto the other side of the plastic. Remove the plastic and let the paint dry completely.



## OTHER PAINTING TIPS FOR THE LION TAMER:

For clear painting instructions, watch a video at [www.tikkurila.fi/lastenhuone](http://www.tikkurila.fi/lastenhuone).

WHAT YOU NEED  2,7l J442 Joker, 0,9l K385 Joker, 0,9l L485 Joker, 0,1l Taika Gold Paint  6h

In association with: Catalina, Granit, Habitat, Ombrellino, Tingeling, Vepsäläinen.





## A GLOWING TIP:

Paint the outlines of the star using Taika Glow if you want your star to glow in the dark.

**Walls:** Joker, X342 Hyacinth.

**Star:** Liitu, X370 Tiffany.



## GIRL, YOU'RE A STAR!

OMG what a background for selfies and videos: a star the size of the wall! Created using Liitu Blackboard Paint, you can draw and write your feelings and stuff to remember on this star.



**Jewelry rack:** Helmi Furniture Paint, F497 Paper.

**Boxes:** Taika Paint, 2076 Mercury, 2074 Venus.







# PAINT A STAR!

## HOW TO DRAW A STAR ON THE WALL:

- 1 Mark the topmost point at a height of 2 meters. Draw a straight line down from the point using a spirit level.
- 2 Measure 140 cm vertically from the bottom of the star and mark the point. Draw a horizontal line at a height of 140 cm using a spirit level and mark the tips of the points.
- 3 Measure 70 cm in each direction from the center of the bottom and mark the points with masking tape. You have now marked all the tips of the star.
- 4 Attach string in between the tips with masking tape.
- 5 Draw the outlines of the star on the wall with a pencil.

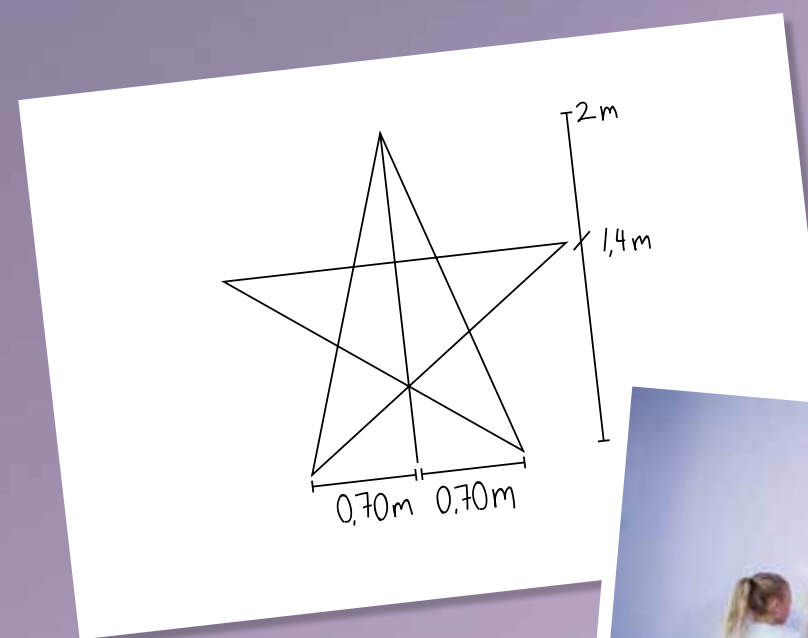
## HOW TO PAINT A STAR ON THE WALL:

- 6 Apply wide masking tape to the outer edges of the star.
- 7 Open the paint tin and stir the paint well.
- 8 First paint the outlines with a small roller.
- 9 Paint the rest of the star and let the paint dry in between the layers.
- 10 Remove the tape as soon as you have finished painting.

WHAT YOU NEED  2,7l X342 Joker, 0,9l X370 Joker  3h

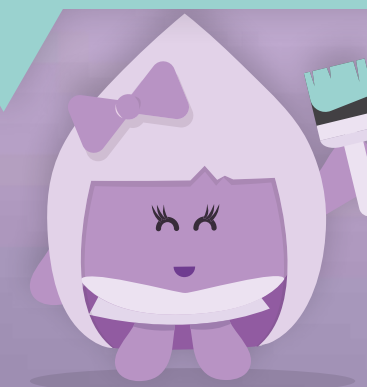
In association with: Catalina, Granit, Habitat, Lumo Kids, Vepsäläinen.

PS. It only takes a day to paint the star. Just remember to let the wall dry properly in between the layers.



## OTHER STELLAR TIPS:

For clear painting instructions, watch a video at [www.tikkurila.fi/lastenhuone](http://www.tikkurila.fi/lastenhuone).





Taika Glow is charged by light and glows after turning off the lights.

**Wall:** Joker, K498 Haven.  
**Houses:** Joker, N500 Agate, Y498 Indian Ink.  
**Windows:** Joker, K498 Haven, Taika Glow.



## ADD GLITTER TO THE NIGHT

This magical city has two faces. In the daytime, the dark silhouette provides an impressive backdrop to furniture and other items. When the lights are turned off, the city with its hundreds of windows comes to life.



The stripe was painted using Magnetic paint for displaying notes and pictures.

**Magnetic stripe:** Magnetic paint, Joker, S309 Equator.



The room comes to life when you switch off the lights!



The windows were painted using Taika Glow effect lacquer, which glows in the dark. If the room has strong lighting, Taika Glow will work for up to six hours after the lights have been turned off.



## HOW TO PAINT GLOW-IN-THE-DARK HOUSES:

- 1 Paint the wall using shade K498 Haven.
- 2 Draw the silhouette of a city using a spirit level. Apply masking tape to the outer edges of the houses. Trim the tape corners with a wallpaper trimming knife.
- 3 First paint the edges of the houses with a small roller using shade N500 Agate.
- 4 Apply two layers of paint, if necessary. Allow to dry.
- 5 Draw lower houses at the front and apply wide masking tape to their outer edges.
- 6 Paint the houses twice using shade Y498 Indian Ink. Allow to dry.
- 7 Mark out small areas for windows with masking tape.
- 8 First paint the windows using shade K498 Haven. Allow to dry.
- 9 Apply two layers of Taika Glow to the windows. Remove the tape as soon as you have finished painting.

### WHAT YOU NEED



2,7l K498 Joker, 2x 0,9l N500 Joker, 0,9l Y498 Joker, 0,225 Taika Glow



6h

In association with: Carlings, Kiasman museokauppa, Vepsäläinen.



### TIPS FOR GLOW PAINTING:

For clear painting instructions, watch a video at [tikkurila.fi/lastenhuone](https://tikkurila.fi/lastenhuone).





**Walls:** Joker, H336 Candyfloss.  
**Stripes:** Liitu, F306 Sorbet, G401 Persimmon, F336 Marshmallow, and Y441 Aquarelle.  
**Clouds:** Liitu, F497 Paper.  
**Horse:** Taika Paint, 2074 Venus.



## UNDER A PASTEL RAINBOW

This lovely pastel rainbow, painted with Liitu Blackboard Paint, can be used for drawing whatever pops into your mind. The names of the shades chosen for the room – *Candyfloss*, *Sorbet*, *Marshmallow*, *Aquarelle*, and *Persimmon* – taste sweet and speak more than a thousand words. Could a young girl's room be any more delicious?



Add stardust to the upper part of the wall using silver Taika Stardust effect glaze.







## HOW TO PAINT A RAINBOW:

- 1 Paint the wall using shade K336 Candyfloss.
- 2 Draw five horizontal lines on the wall at distances of 15 cm, using a spirit level. Draw the lowest line at a height of one meter.
- 3 Apply masking tape outside the lines of the topmost stripe. Do the same for the second lowest stripe.
- 4 Paint the topmost stripe using shade F306 Sorbet. Allow to dry and apply a second layer of paint, if necessary. Remove the tape.
- 5 Paint the second lowest stripe using shade F336 Marshmallow. Allow to dry and apply a second layer of paint, if necessary. Remove the tape.
- 6 Once the first stripes have dried, apply masking tape outside the lines of the remaining stripes.
- 7 Paint the second stripe from the top using shade G401 Persimmon. Allow to dry and apply a second layer of paint, if necessary. Remove the tape.
- 8 Paint the lowest stripe using shade Y441 Aquarelle. Allow to dry and apply a second layer of paint, if necessary. Remove the tape.
- 9 Draw clouds at the ends of the rainbow. Place the lower edge of the cloud on the lower edge of the rainbow. Use a plate to help you draw the cloud.
- 10 Paint the edges of the cloud with a small brush using shade F497 Paper. Allow to dry and apply a second layer of paint.
- 11 Paint the center of the cloud twice with a small roller. Allow to dry in between the layers.
- 12 Let the paint dry for a week before using the chalkboard.

### WHAT YOU NEED



2,7l H336 Joker, 0,9l F306 Liitu, 0,9l G401 Liitu, 0,9l F336 Liitu, 0,9l Y441 Liitu, 0,9l F497 Liitu



6h

In association with: Granit, Kiasman museokauppa, Ombrelino, Vepsäläinen.



### PEARLY HORSES AND OTHER FUN STUFF!

For clear instructions on how to paint the rainbow and pearly horses, watch a video at [www.tikkurila.fi/lastenhuone](http://www.tikkurila.fi/lastenhuone).







TIKKURILA



010 860 8600 ark. 8–19  
tikkurila.fi/maalilinja

**MAALILINJA**  
Kaikki ideasta toteutukseen



www.tikkurila.fi